

NATIONAL ELECTRICAL CODE:

Your Guideline to Safety

▶ First published in 1897, the **National Electrical Code** has been adopted in **all 50 states** as the standard for safe electrical installation, inspection, and installation to protect people and property from **avoidable electrical hazards**.

There have been **15 code revisions** since **1974**, the year the average American home was built.



The National Electrical Code (NEC) is updated **every 3 years** to include the latest in proven safety technology.



The NEC creates a **universal electrical safety standard**. Allowing all new and renovated construction built to code to be **safe from electrical hazards**.



The NEC applies to **new construction and renovations**. The code is only in effect after it is adopted by the state or local jurisdiction.



Is your home up to code? Contact a **qualified electrician** to ensure your home is **safe and up to code**.



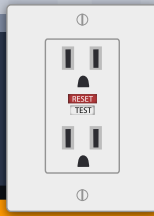
www.facebook.com/ESFI.org

www.twitter.com/ESFI.org

www.youtube.com/ESFI.org

MAY IS NATIONAL ELECTRICAL SAFETY MONTH

GFCIs



Your *Protection*
from Electrocution



Ground Fault Circuit Interrupters have **saved thousands of lives** since their introduction to the National Electrical Code in the 1970s. Make sure your home is **properly protected** against ground faults with the correct installation of GFCIs.

50%

The Consumer Product Safety Commission estimates that **50% of home electrocutions** have been **prevented** by the introduction of GFCIs.

GFCI Protection is required for outlets installed in:



How to Test a GFCI

- 

Push the **RESET** button
- 

Plug in a nightlight or similar device
- 

The nightlight should be **ON**.
- 

Press the **TEST** button.
- 

The nightlight should turn **OFF**.
- 

Push the **RESET** button again.
- 

The nightlight should turn back **ON**.
- 

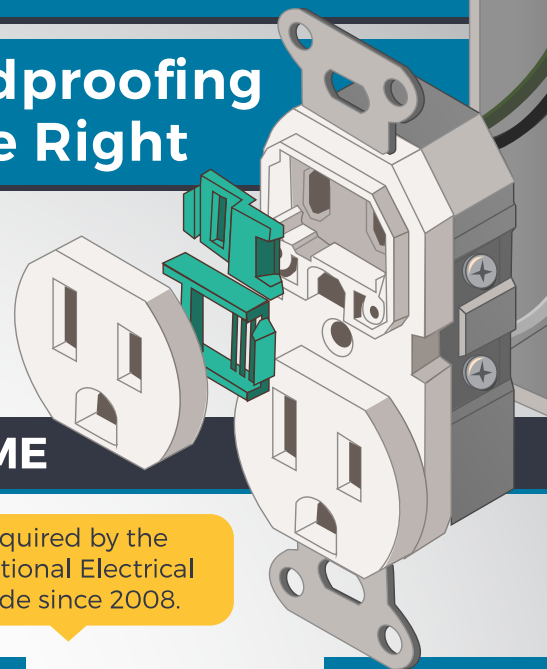
If the device does not turn on, **contact a qualified electrician** to inspect the outlet.

TAMPER RESISTANT RECEPTACLES

Childproofing Done Right



A study by Temple University found that **100%** of all 2-4 year olds were able to remove one type of plastic outlet cap **within 10 seconds**. Properly childproof your outlets by installing **Tamper Resistant Receptacles**.



HOW TO PROPERLY CHILDPROOF YOUR HOME

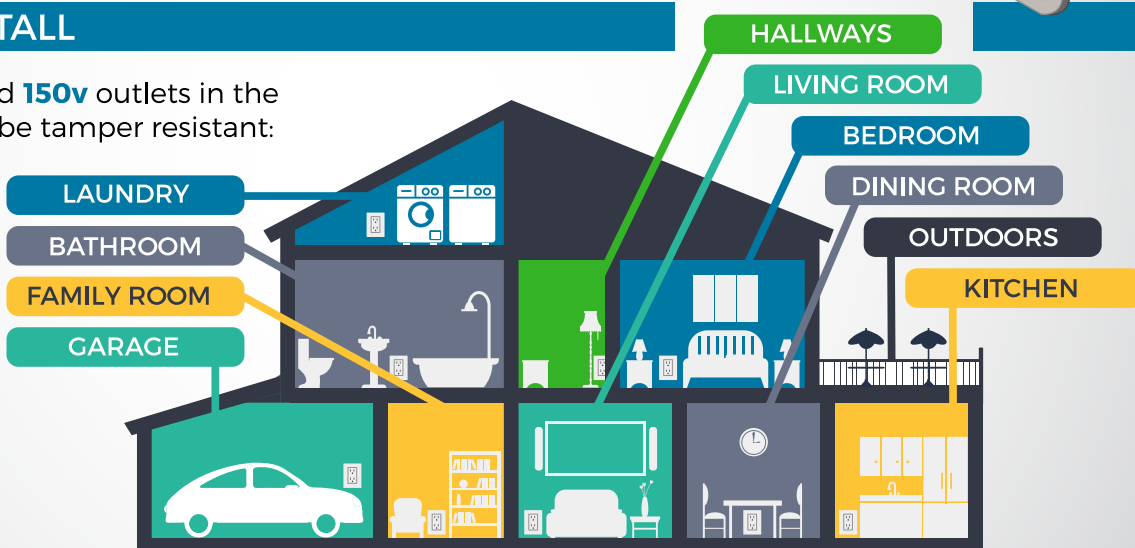
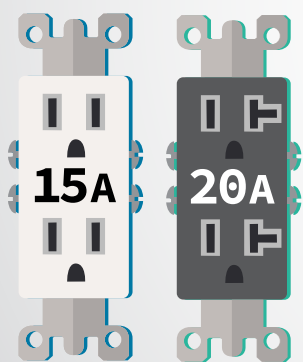
⚡ Tamper Resistant Receptacles offer a permanent solution to outlet covers.

⚡ Built in shutters prevent foreign objects from being inserted into the outlet.

⚡ Required by the National Electrical Code since 2008.

► WHERE TO INSTALL

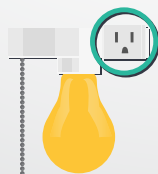
All **15A - 20A, 125v** and **150v** outlets in the following areas must be tamper resistant:



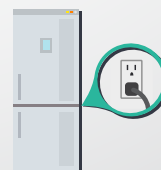
► EXCEPTIONS



Outlets located more than **5 ½ ft** above the floor.



Outlets that are part of a **luminaire**.



Outlets dedicated to **appliances** that **cannot** be easily moved.

► NEW IN 2017

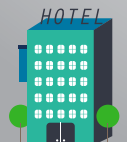
Tamper Resistant Receptacles are **required** in new and renovated:



Childcare facilities.



Preschools and **elementary education** facilities.



Hotel and **motel** guest rooms.



Gyms, skating rinks, auditoriums, and **places of waiting.**



Offices, corridors, waiting rooms, and similar rooms in **clinic, medical and dental offices,** and **outpatient facilities.**



www.facebook.com/ESFi.org

www.twitter.com/ESFIdotorg

www.youtube.com/ESFIdotorg

MAY IS NATIONAL ELECTRICAL SAFETY MONTH

ELECTRIC **SHOCK** DROWNING

UNKNOWN DANGER LURKING IN THE WATER

Docks and boats carry sources of **electricity**. Faulty wiring or the use of damaged electrical cords and other devices can cause the surrounding water to become **energized**. NEVER swim near a marina or a near a boat while it's running.



There is **no visible warning** to electrified water.

Electric current in the water causes the **paralysis of muscles** which results in **drowning**.



The 2017 NEC now **requires** marinas and boatyards to have **ground-fault protection** to help prevent water electrification. Check to see if your marina, and the boats in the marina, have proper **GFCI protection**.

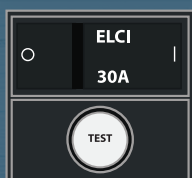


As little as **10 milliamps**, 1/50th the amount used by a 60 watt light bulb, can cause **paralysis** and **drowning**.



WHAT TO DO IF YOU SEE **ELECTRIC SHOCK DROWNING** TAKING PLACE

Turn power **off**



Throw a **life ring**



Call **911**



NEVER enter the water



You could become a victim too.

WARNING – POTENTIAL SHOCK HAZARD: ELECTRICAL CURRENTS MAY BE PRESENT IN THE WATER

The 2017 National Electrical Code **requires** marinas and boat docks to post electric shock **warning signs** where electricity is used **near water**.



MAY IS NATIONAL ELECTRICAL SAFETY MONTH



www.facebook.com/ESFI.org

www.twitter.com/ESFI.org

www.youtube.com/ESFI.org



SURGE PROTECTION



Keeping your Electronics and Home Safe

The National Electrical Manufacturers Association estimates that **60-80%** of surges originate from **internal sources** (within a home or business). Keep your valuable electronics **safe** by protecting them from the surges that can **damage or destroy them**.

! What is a power surge? A power surge is a sudden and unwanted **increase in voltage** that can damage, degrade or destroy electronic equipment. Surges can occur when large appliances, such as air conditioners, turn on and off. Surges can also originate from electric utilities or lightning.

LEVELS OF PROTECTION

GOOD



Point-of-Use Surge Protection



Easy to use
- just plug in.



Only protects electronics **plugged into the device**.



Must be **replaced** over time or after a major surge event.

BEST

Whole Home Surge Protection



Must be installed by a **qualified electrician**.



Provides protection for your **entire electrical system** at home including large appliances, outlets, and light switches.



Protects against **larger surges** and provides **longer lasting** surge protection than point-of-use devices.



No surge protection can handle a **direct lightning strike**. **Disconnect** sensitive electronics if you suspect a surge is coming.

Power strips and surge protectors are **not the same**. Not all power strips offer surge protection.



MAY IS NATIONAL ELECTRICAL SAFETY MONTH

www.facebook.com/ESFi.org

www.twitter.com/ESFIdotorg

www.youtube.com/ESFIdotorg